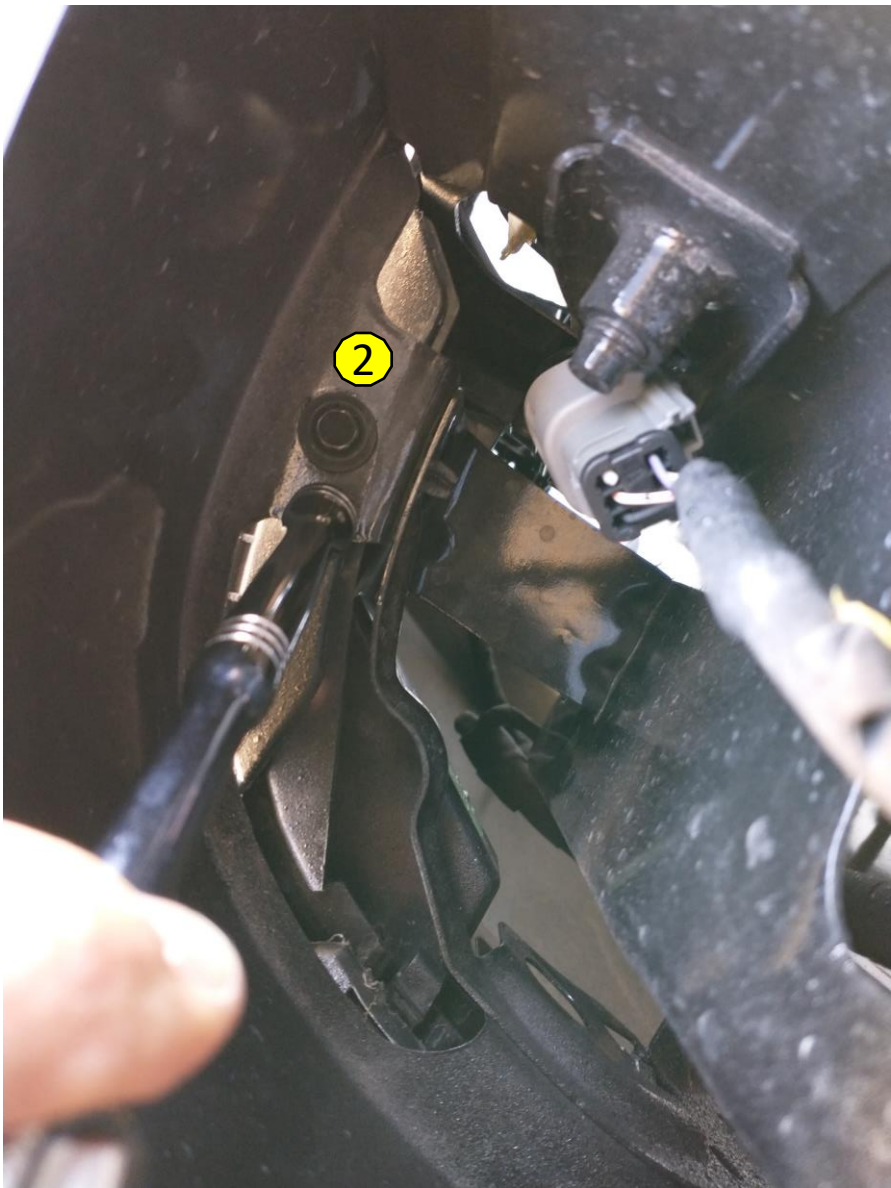




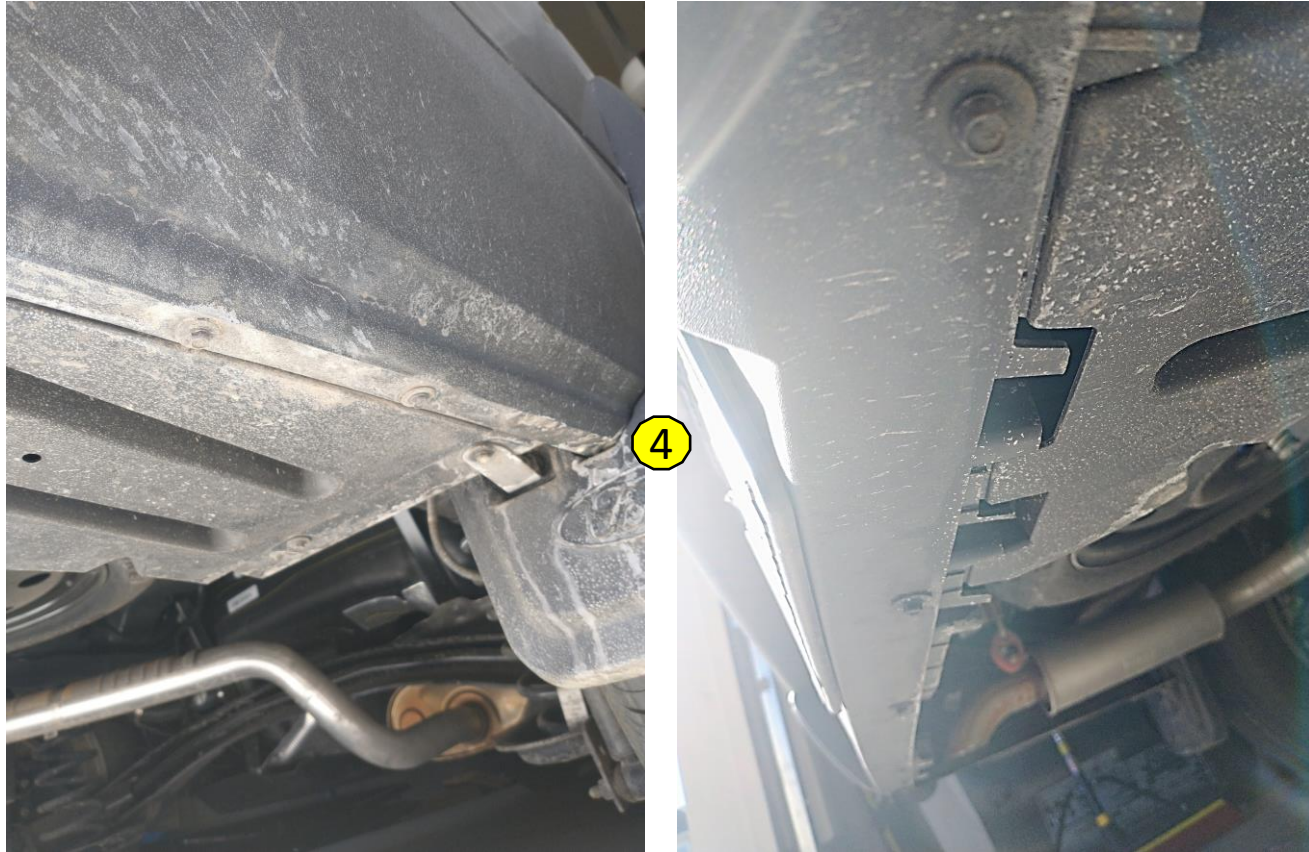
1. Open your tailgate. Remove both taillights by removing two **8mm bolt** head screws per taillight. Take your time pulling, as there are two plastic post that need to come out of their positioning spots.



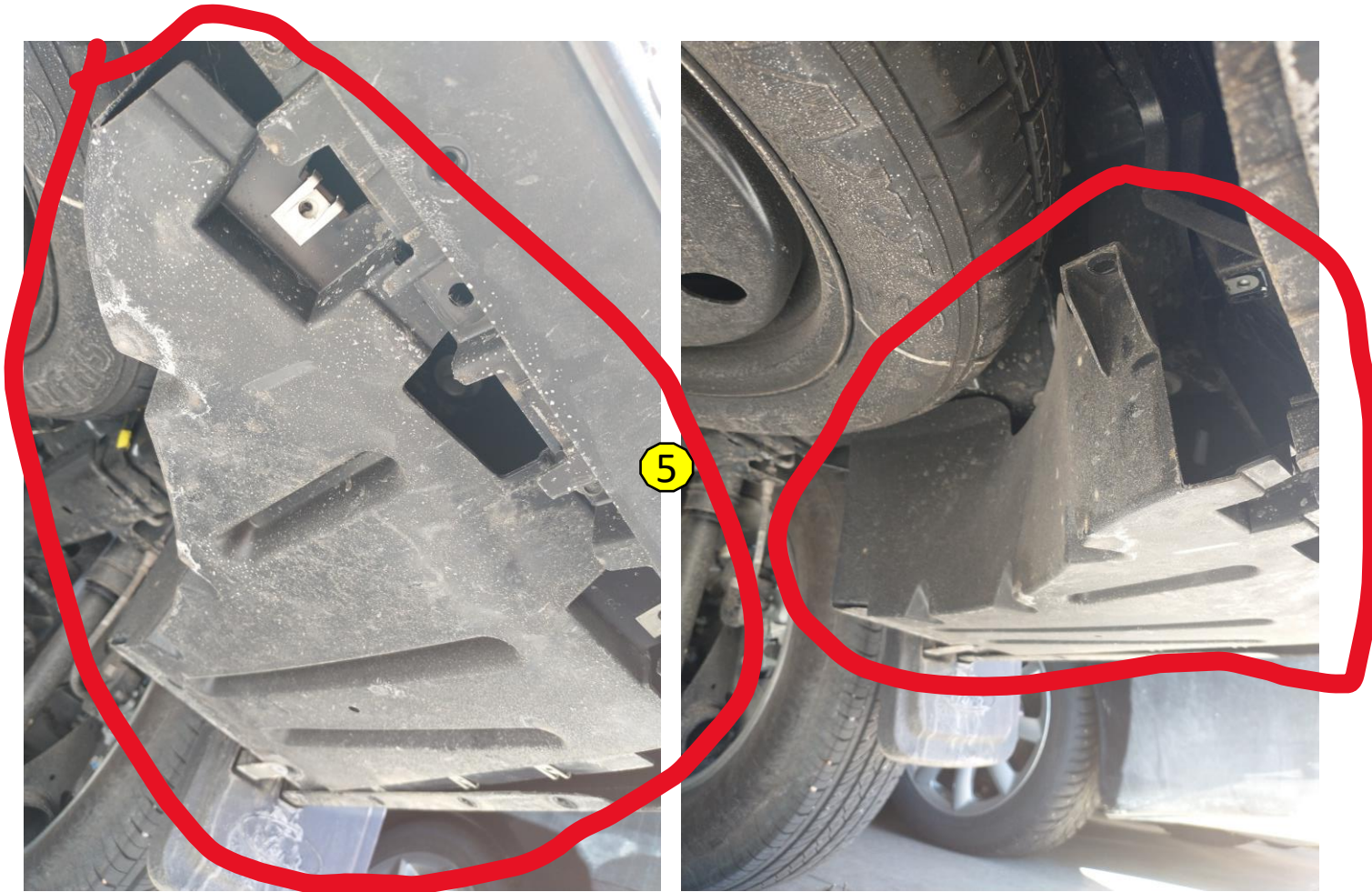
2. With taillights removed, look downward in the cavity the taillight sits. This picture shows bolt head screw that you need to remove. You will need a socket extension to reach them. These bolt heads are **8mm** bolt heads (unlike the rest of all the bolt heads you will remove).

3

3. If you have mud flaps, remove them. The mud flaps attach themselves in part to the rear bumper fascia and need to be removed. If you don't have mud flaps, simply remove the two bottom 7mm bolt head screws that secure the wheel liner to the bumper fascia.



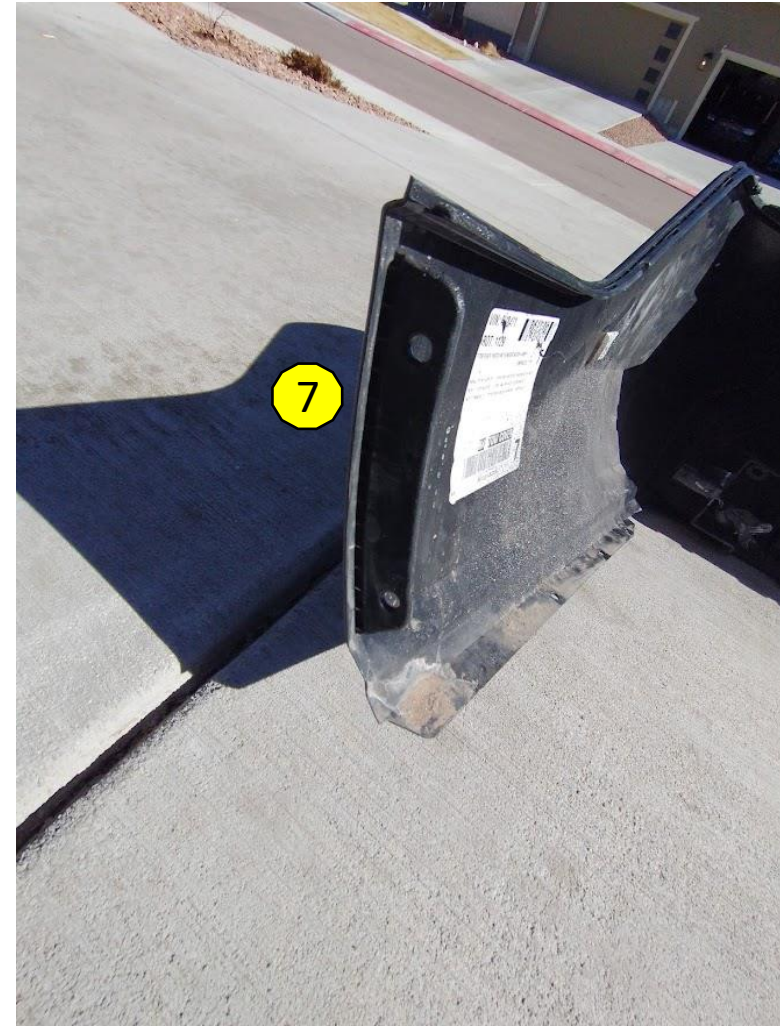
4. On the underside of the bumper, **ALL** the **7mm bolt-head** screws that are visible connecting the bumper fascia to something need to be removed.
 - Note: The bumper fascia is also attached to two sub pieces of plastic structure on both driver and passenger side. Each has two dedicated 7mm bolts you want to remove and are clearly visible, as are all underside 7mm bolt head screws to be removed.



5. Passenger side extra plastic "box" removal. I have no idea what this is, but it needs to be removed in order to access the heavy-duty bolts that hold in the factory crash bar. Remove all 7mm screw head bolts and the one push type plastic button. This box is really flexible plastic, so getting it out once screws are removed is simple.



6. Underneath the tailgate and right above the bumper are two 8mm bolt heads that secure the bumper fascia to the vehicle. You'll need a socket extension to reach these.



7. Bumper fascia removal. Start with the “wings” of the bumper. There are no metal clips, only plastic tabs that sit in a dedicated opening of mounting brackets. With you positioned at the side of the vehicle and facing the wings of the bumper, **pull out and toward you and they will pop out.**



8. With bumper “wings now free, and now positioned at the back of the vehicle it is NOT enough to just pull straight back. I had to lift from the bottom/underside of the bumper fascia and **pull UP and BACK**. I started hearing pops and that seems to be the various tabs releasing themselves from their dedicated spots. Note: This was the hardest part, pulling and wiggling until the pops happened and then finally released. Note: Disconnect the wiring harness which attaches to the license plate light.



9. With bumper fascia removed, get under the truck and you clearly see the 4 large 18mm bolts that need to be removed on each side. Note: Be careful when removing the last 18mm bolt, The crash bar does is held in place only by the bolts, so the crash bar will want to come falling out and down if you don't support it. Scared myself, so just sharing.



10. The printed installation instructions that come with the tow hitch instruct you to remove the muffler from the hangar bracket. But there is enough give in the rubber muffler hanger to just push it aside some and access the bolts on the driver side. I chose to simply push muffler aside to get a clear shot at bolts.

11. From this point on, you pull the factory crash bar out, install the new crash bar that has the tow hitch and put it back together in reverse order. Make sure to crank down those 18mm bolts.



12. Reinstalling bumper fascia requires removing the dedicated tow hitch plastic flap, so the tow hitch is now exposed. With bumper fascia on the ground, on the underside of the bumper, drill out the two rivets that help secure it. Then take your time to free the various tabs on the plastic flap to remove it from the bumper fascia.