

# Rear Sliding Window Replaced, Still a Water Leak Same Area.

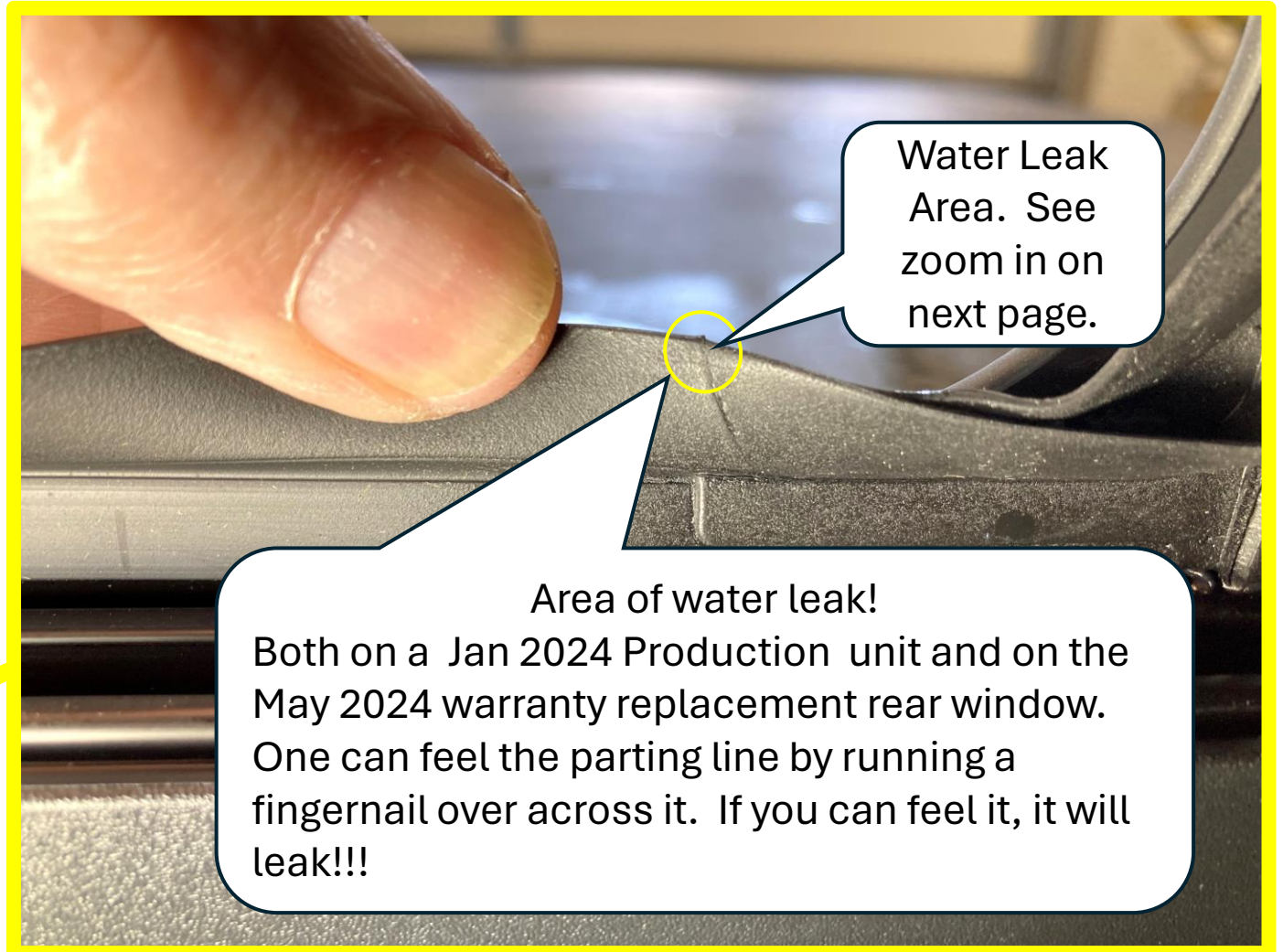
27 May 2024

Window replaced on 22 May 2024.

Rear sliding window water leak into cabin at driver's side lower corner..

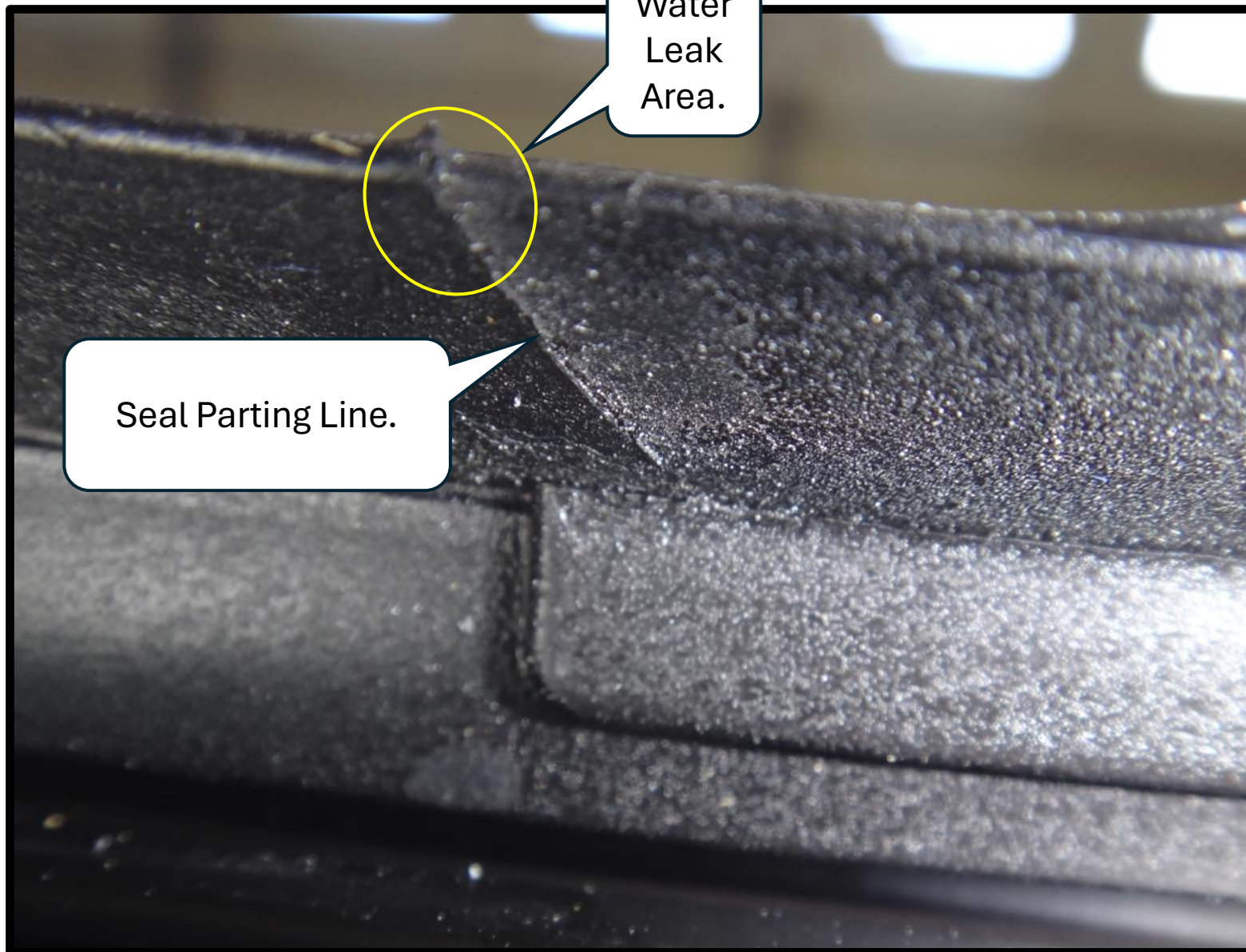


Photo taken from inside of cabin, on drivers side rear seat looking towards rear right truck tail light. Power window open.



Above is close up of area shown in picture on the left.

Zoomed in  
area, see  
previous  
page.



Water  
Leak  
Area.

Seal Parting Line.

Movie of drip with replacement window, same drip spot as production window, at seam:



Click on  
picture  
and  
then  
play  
here.

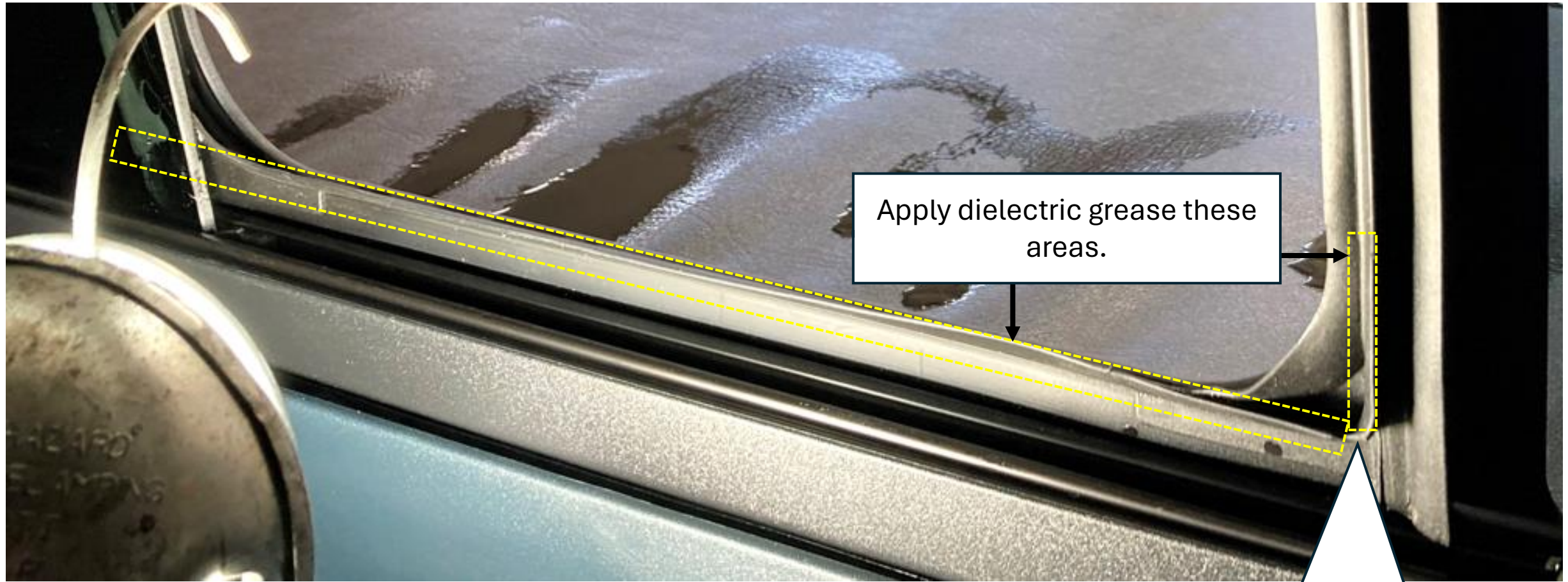
It appears that many if not all seals have mold parting lines that may leak. Replacing the window did not fix leak in my case. The design or reworking the mold that makes the seal is needed to fix the problem or the factory polishing the surface to ensure no bump in parting line.

My fix was to lightly sand with 15 micron (very fine) sandpaper the parting line in the seal and apply dielectric grease to fill in any scratches or voids in the molded rubber seal.

You just want to flatten out the angled parting line both on the left and right side of the window (see pages 2&3). Apply dielectric grease to the top edge and the inside 1/4 inch from top of seal all way from left to right where it rubs against the sliding glass (see page 6). Key here is the dielectric grease (any brand). You need very little, like a pea size or less, and apply it once or twice horizontal across the seal lip with finger with window open.



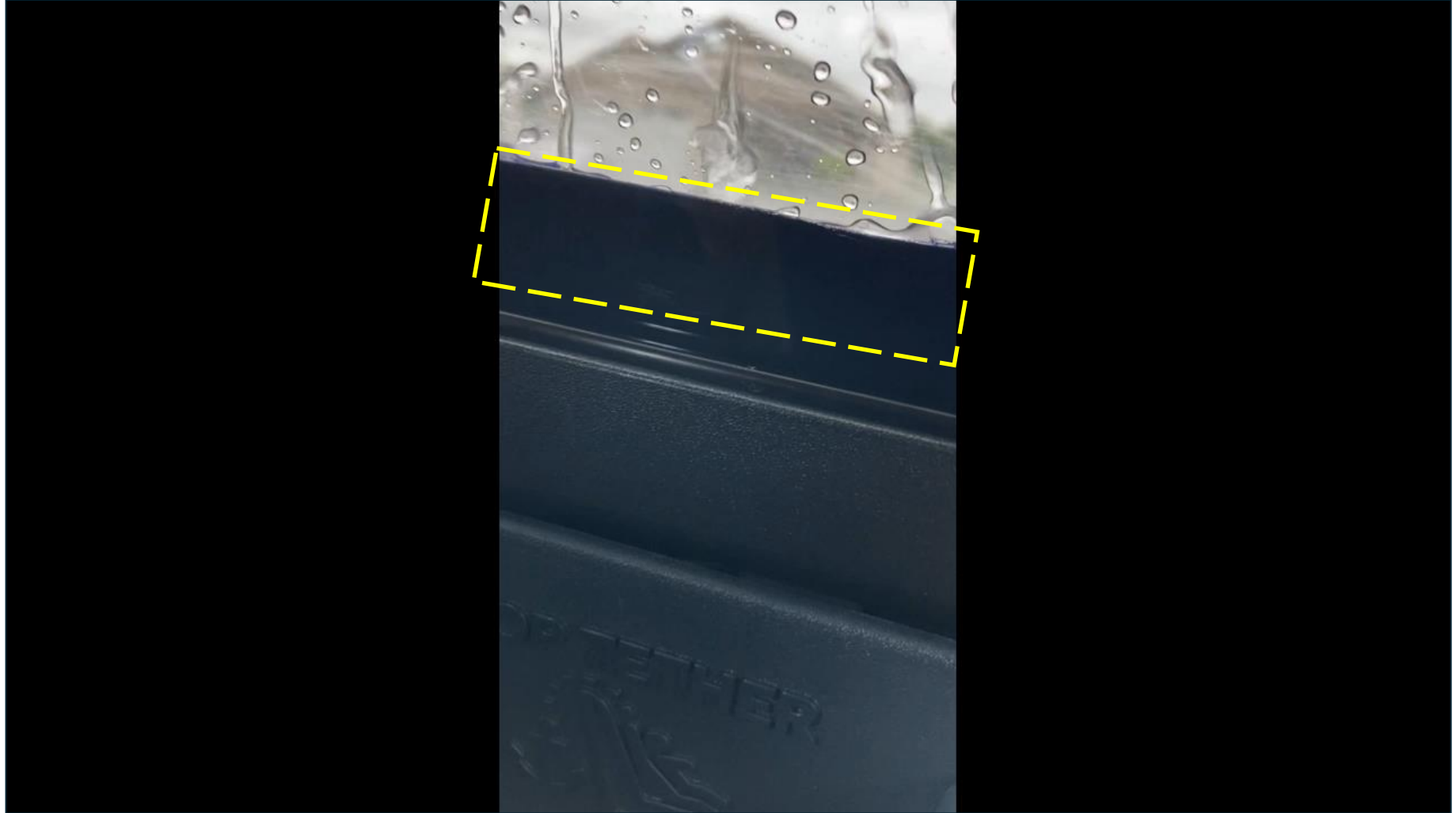
Area where to apply the dielectric grease:



Apply dielectric grease these areas.

Make sure corner is covered with grease.

No leak anywhere on seal, key is a thin layer of dielectric grease on seal where it contact sliding glass as shown on previous page. Remove any high spots with fine sandpaper first. A quick test with a water hose will quickly reveal leaks and to ensure you have a good fix. Use flashlight in the cabin to better see if any leak exists:



Click on  
picture  
and  
then  
play  
here.

## Conclusion, owner needs to fix issue:

1. Root cause of the issue is that the window rubber seal has parting lines (page 2&3) which allow a water passage to seep from outside to inside of cabin.
2. Lightly hand sand (stroking left to right, not up and down) with fine grit paper to flatten the parting seam in rubber seal.
3. Apply light coat of dielectric grease to the upper section of the seal where it contacts the sliding glass (page 6). Make sure to add the grease to the bottom sealing corner since the corner pocket fills with water.
4. Dielectric grease is what seals out the water, the sanding makes it easier for the grease to seal the leak. Depending on how many time the window is opened and closed will depend on how often to reapply the grease. I feel once a year will work for me since I open and close the window only a few times a year.
5. Dielectric grease will not react with the glass or rubber and resists heat well. It definitely will seal out the water in a rain. It is used on brake disk pads, electrical connectors, seals, etc. Many many uses for it, it is a good product.
6. Remember that a water drip every 4 seconds equates to about a cup in 40 minutes. You do want to seal any drip.