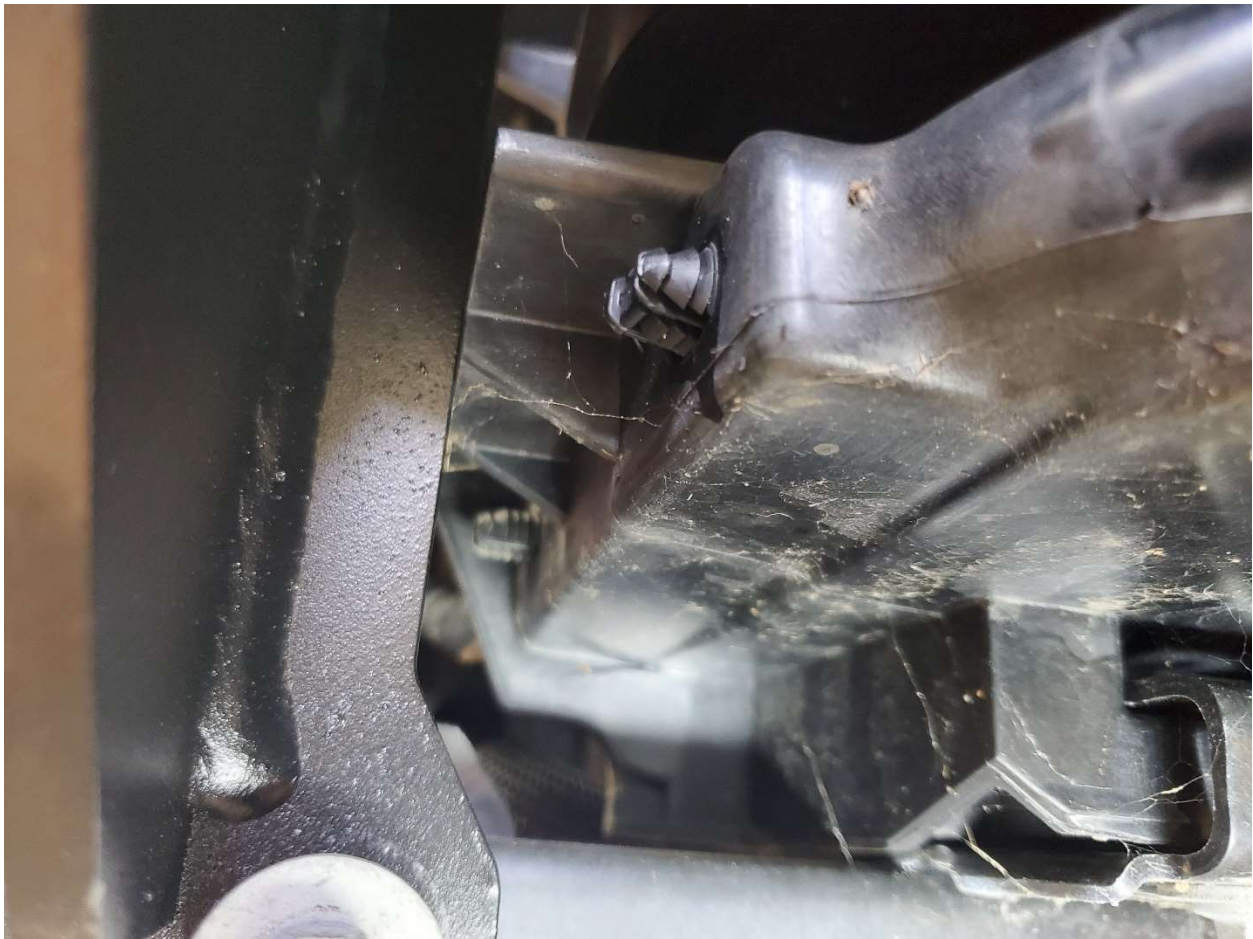


Demo baseplate additional details,

First off many thanks to all the members who have posted. Especially BradnChristine, Tabrewer, realshelby,

Referring to BradnChristine and his observation about the baseplate interfering w/ the shutters. I removed the plastic funnel part in front, two screws on either side and then a row of clips on the top and bottom. Then I test fit the baseplate, holding in place with a couple bolts.

The first thing I did was to see if I needed to trim plastic on either side. On the passenger side, I didn't have to trim anything



On the driver side I had to trim this plastic, I just marked it with a silver sharpie and cut it with tin snips and cleaned up the edges with a file



Now that I was sure that nothing interfered with the baseplate bolting into the truck I checked the shutters. In the first pic below you can clearly see it interferes with this shutter



And, sorry not the greatest pic, but also with this one.



If needed you can gently open and close those shutters by hand to see if they interfere. They did so I removed them. Then I slide some paint tape where the the plastic funnel part mounts and used a marker to mark where the baseplate ran across. I also put some tape where the electrical connector and breakaway switch would mount.

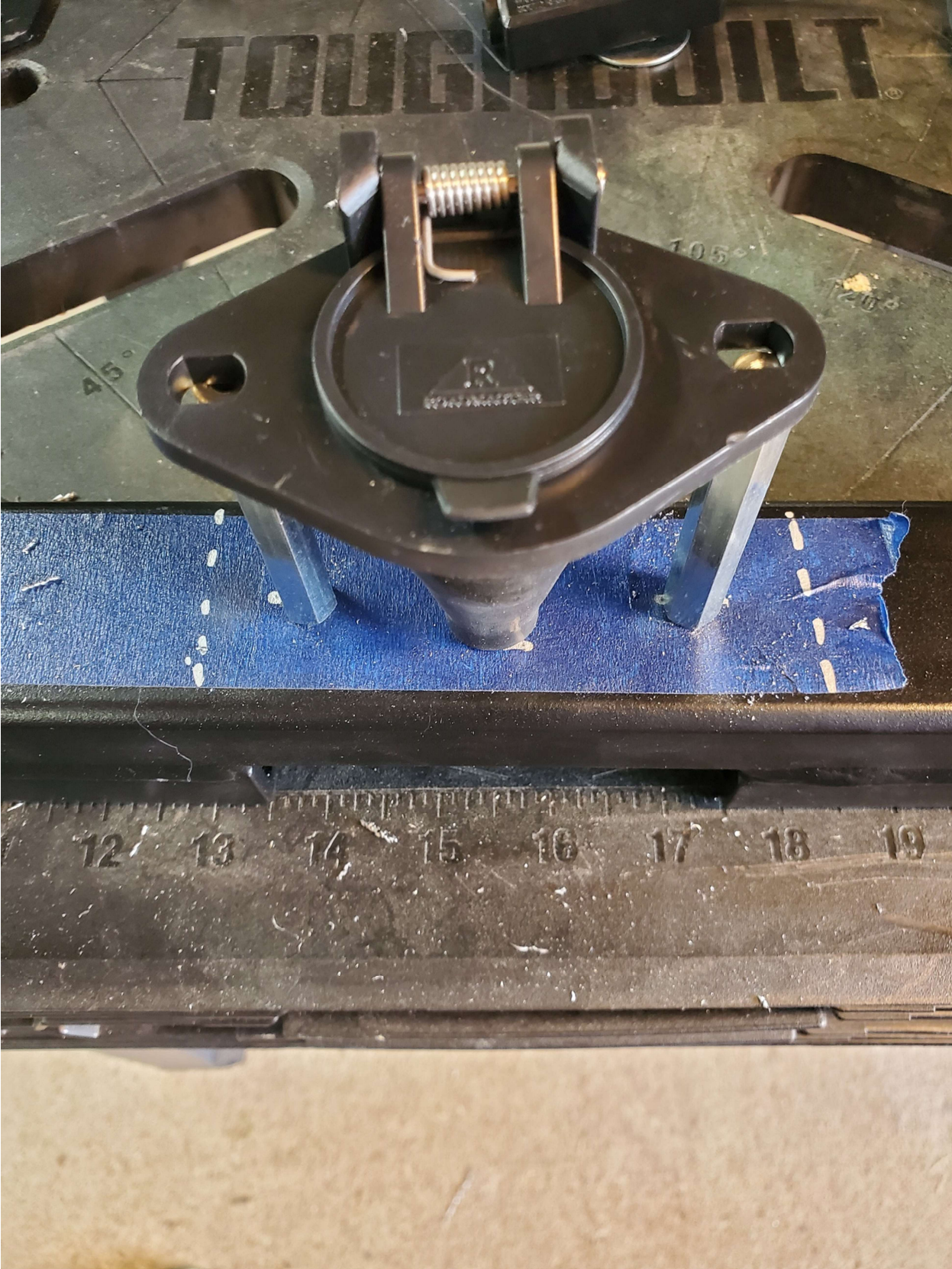
At this point I also test fit the front bumper/fascia, the two top clips hold it in place, that allowed me to mark out where the electrical connector and breakaway switch would mount.



Then removed the baseplate, put the the plastic funnel part temporarily back one and transfred the marks on the paint tape to the part. That way I only had to cut the very minimum off of it.

With the base plate on the workbench, I marked the holes for the electrical connector. I used two long standoffs that I had laying around. You can get these from McMaster-Carr if needed. The ones I had were metric, M6 on both sides. So I drilled through the base plate and ran a bolt through to mount the standoff to the baseplate. Then use some stainless steel screws and washers to mount the connector to the top.

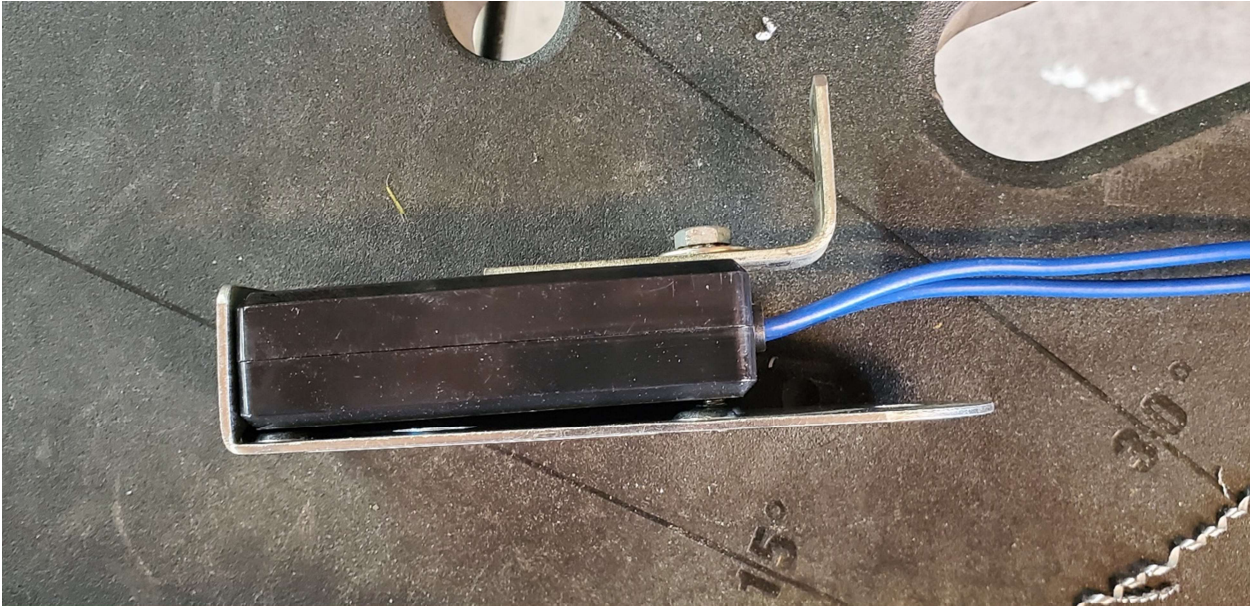


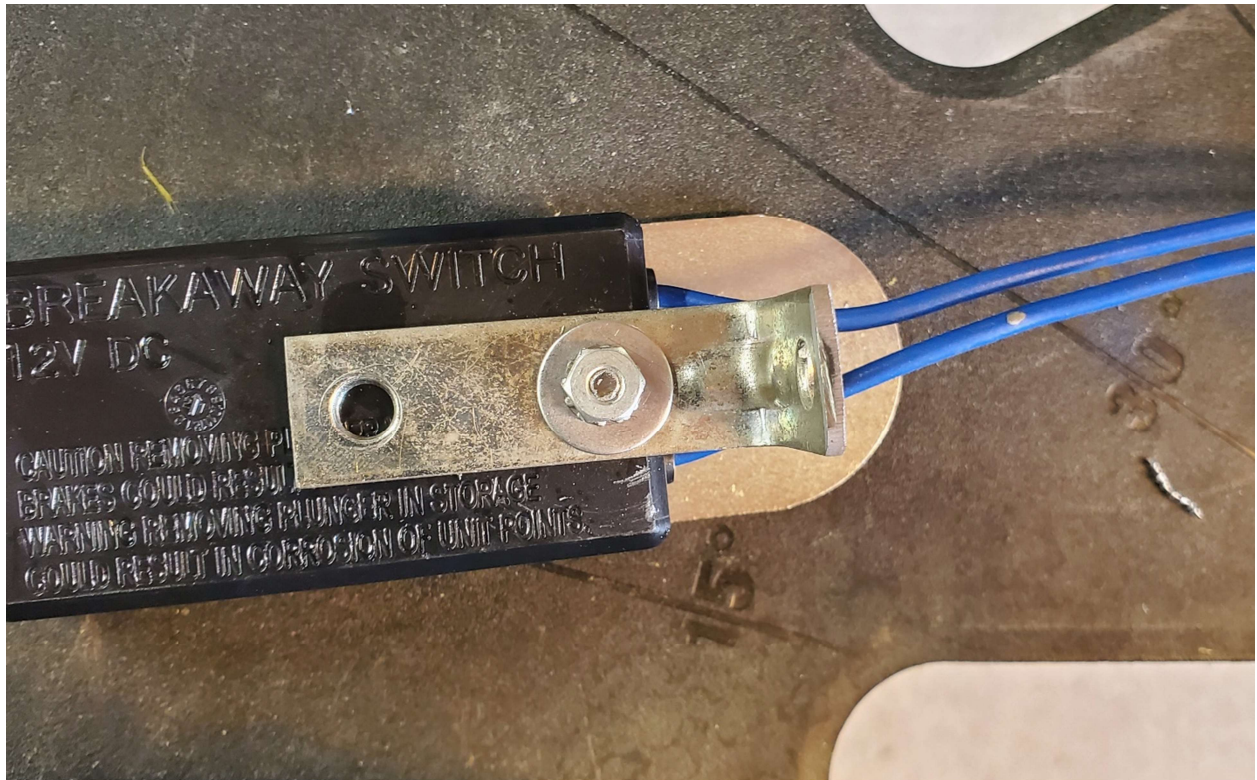


Next up breakaway switch. This is the one that came with the RVI brakeshadow I installed. Its fairly generic I believe. I wanted a more secure mounting, so I drilled out this rivet (red).



Then ran a small screw through it to an angle bracket





This provides two mounting points for the breakaway switch, I then match drilled to the base plate and tapped some holes to mount it. I used loctite on all fasteners. I also when wiring this up later, I used some very oversized wireties to secure the blue wires to the baseplate as added insurance. Since its safety item, two fasteners would need to fail and the wire ties.

Heres what it all looks like.



