

# Fuel and Refueling

- C Left-hand side. Pull the rear of the fuel filler door to open it.
- D Right-hand side. Pull the rear of the fuel filler door to open it.

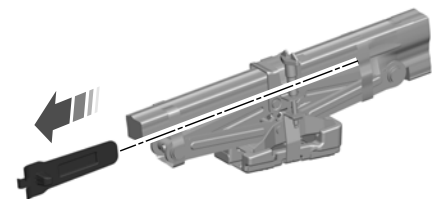
- 2. Insert the emergency opening tool in the position shown and gently pry the fuel door open.

**Note:** Do not press the fuel filler door release button if the emergency opening tool has been used.

## MANUALLY OPENING THE FUEL FILLER DOOR - HYBRID/ELECTRIC VEHICLE (HEV)

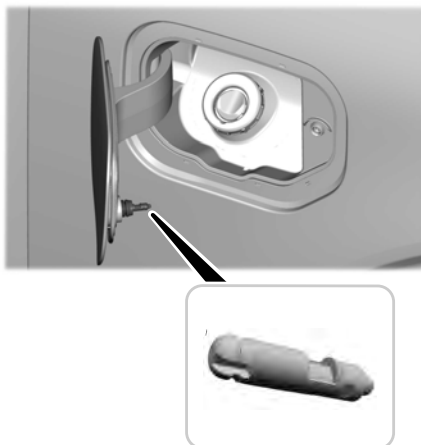
**Note:** The transmission must be in park (P) or neutral (N).

To manually open the fuel door do the following:



- 1. Retrieve the emergency opening tool.

**Note:** The emergency opening tool is with the jack and tool bag. See **Changing a Flat Tire** (page 346).



Using the emergency opening tool can cause the tappet to temporarily dislodge from the fuel filler door and remain attached to the fuel filler door opening. If you press the fuel filler door release button after using the emergency opening tool, locate the tappet and reinsert it into the fuel door.

## FUEL TANK CAPACITY

### Advertised Capacity

The advertised capacity is the maximum amount of fuel that you can add to the fuel tank when the fuel gauge indicates empty.

